

Visual LilyPond Grob Index

Legend:

GraphicalObject (Grob)

Engraver*

Context

Example: 'BarNumber*' means:

- the graphical object is called: BarNumber
- suggested search terms: bar number
- the engraver name (if not specified otherwise): Bar_number_engraver

Note that not all engravers are shown due to space constraints.

Score [BreakAlignGroup BreakAlignment ControlPoint ControlPolygon GraceSpacing NonMusicalPaperColumn PaperColumn SpacingSpanner VerticalAlignment]

MetronomeMark* Break_align LeftEdge SystemStartBar SystemStartBrace SystemStartBracket SystemStartSquare [System_start_delimiter

CenteredBarNumberLineSpanner BarNumber* CenteredBarNumber TextMark* unis. 1. 2. % SegnoMark CodaMark SectionLabel Coda

RehearsalMark Mark Parentheses Parenthesis Footnote* Jump JumpScript D.S. % al Coda

Staff [DotColumn LedgerLineSpanner NoteCollision RestCollision ScriptRow SpanBarStub VerticalAxisGroup]

TimeSignature* Key KeySignature StaffEllipsis Skip_typesetting KeyCancellation AccidentalCautionary AccidentalSuggestion Ottava_spanner OttavaBracket 8va

InstrumentName* Clef* ClefModifier Bar BarLine Accidental* AccidentalPlacement Sost. Ped. SostenuitoPedal SostenuitoPedalLineSpanner una corda UnaCordaPedal UnaCordaPedalLineSpanner

Caesura CaesuraScript CueClef* CueEndClef StaffSymbol StaffSpacing SustainPedal SustainPedalLineSpanner StaffHighlight* PianoPedalBracket Piano_pedal OptionalMaterialBracket*

Voice [CombineTextScript FingeringColumn LaissezVibrerTieColumn NoteColumn NoteSpacing RepeatTieColumn StemStub ScriptColumn TieColumn]

Stem* PercentRepeatCounter PercentRepeat* 2 Auto_beam Beam* Dots* Fingering* Script* 2 StringNumber New_fingering DoublePercentRepeatCounter

Rest* NoteHead* RepeatSlash Slash_repeat Flag StemTremolo DoubleRepeatSlash StrokeFinger Arpeggio* Glissando* BreathingSign* DoublePercentRepeat*

MultiMeasureRestNumber MultiMeasureRest* 4 MultiMeasureRestScript TextScript Text FingerGlideSpanner Finger_glide TrillSpanner*

rit. TextSpanner* MultiMeasureRestText lunga cresc. 7 ff Hairpin DynamicLineSpanner TrillPitchGroup Pitched_trill TrillPitchAccidental TrillPitchHead TrillPitchParentheses

PhrasingSlur* Slur* Tie* RepeatTie* LaissezVibrerTie Laissez_vibrer Bend BendAfter LigatureBracket* TupletNumber 3 TupletBracket Tuplet ClusterSpanner* ClusterSpannerBeacon

¹Footnote

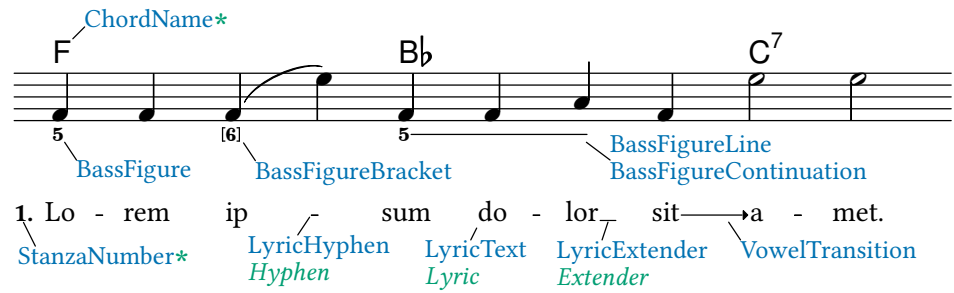
ChordNames

FiguredBass *

BassFigureAlignment
BassFigureAlignmentPositioning

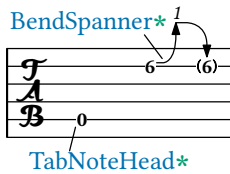
Lyrics

LyricSpace

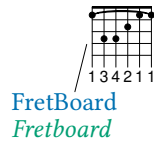


TabVoice

TabStaff

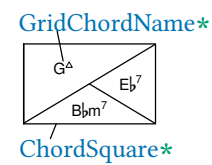


FretBoards



ChordGrid

ChordGridScore

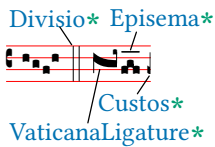


VaticanaVoice

VaticanaStaff

VaticanaScore

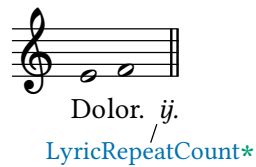
VaticanaLyrics



GregorianTranscriptionVoice

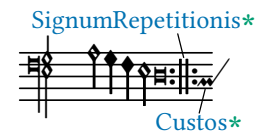
GregorianTranscriptionStaff

GregorianTranscriptionLyrics



PetrucciVoice

PetrucciStaff



KievanVoice

KievanStaff

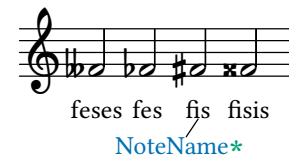


MensuralVoice

MensuralStaff



NoteNames



Various [MelodyItem System SpanBarStub (StaffGroup)]

